

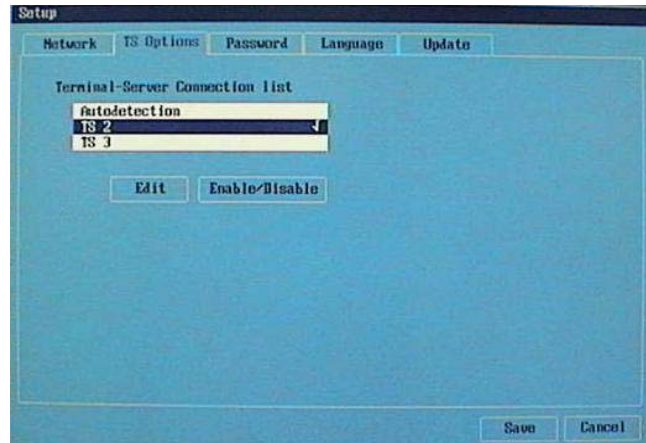


OfficeStation Release Notice

Product	TARGA OfficeStation Series
Subject	New NCT-2000-XP program releases (Release : NCT-2000-XP R4.03.037)
<p>New features & Improvements</p>	<p>* New features</p> <p>1) Auto-Connect Feature</p> <p>With the new Auto-Connect function, you can go straightly into the host PC's operating system without any user interaction.</p> <p>Introducing the Auto-Connect Feature</p> <ol style="list-style-type: none"> 1) Turn-On Your OfficeStation NetStar / Network Monitor 2) OfficeStation Terminal Startup Screen Appears  <ol style="list-style-type: none"> 3) OfficeStation Terminal will go straightly into the Windows Logon Dialog Box automatically.  <ol style="list-style-type: none"> 4) Fill in the User name and Password <p>-How to Configure the Auto-Connect Feature-</p> <p>1-1) OfficeStation / Network Monitor BIOS Setup</p> <p>Step 1) Click "Setup" to setup your Auto-Connect feature</p>

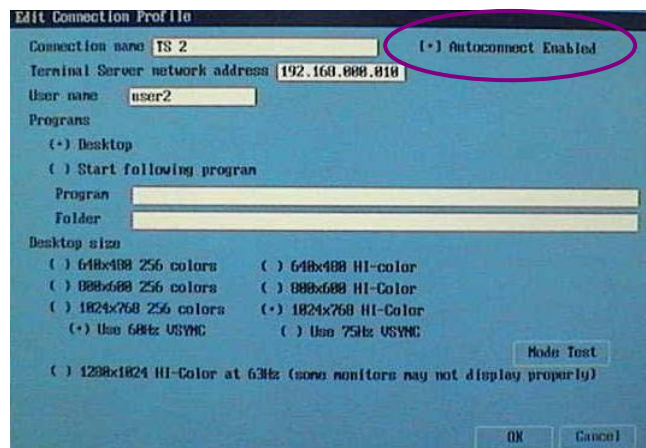
Step 2) Click "TS Options"

Step 3) Select "TS-2" then click "Enable/Disable"



Refer) You must Disable the Autodetection feature.

Step 4) Click "Edit" to select the Option menu



Step 5) Click "Autoconnect Enabled"

Step 6) Click "OK" to save all settings.

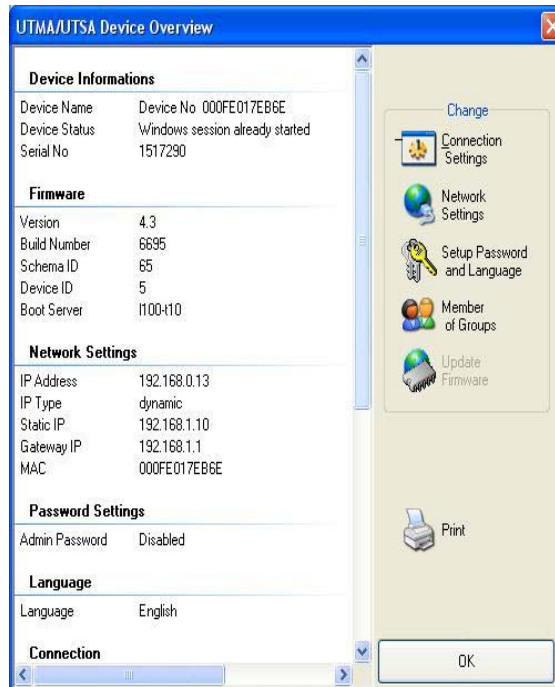
1-2) Host PC's NCT-2000-XP Console Setting

Step 1) Click "Hardware settings(LAN/Local)" menu from NCT-200-XP Console

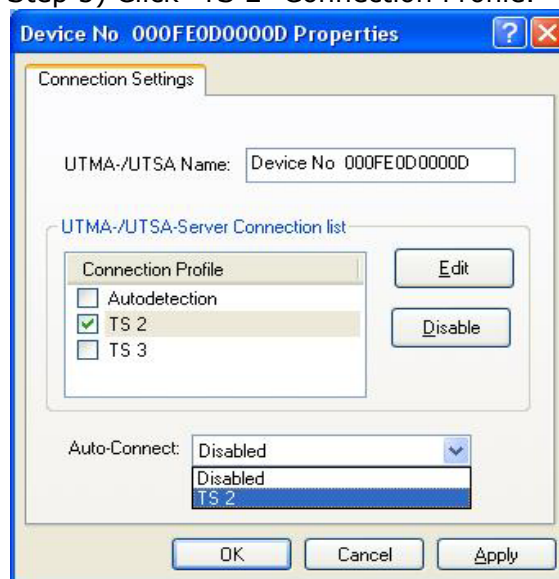
Step 2) Click "UTMA/UTSA device" setup menu

Step 3) Select the OfficeStation device for configure by double click

Step 4) Click "Connection Setting" to change the connection settings



Step 5) Click "TS 2" Connection Profile.



Refer) You must Disable Autodetection feature.

Step 6) Click "OK" to save all settings.

2) Auto Logon Feature

With the new Auto-Logo function, you can bypass the Windows Logon Dialog box by the pre-defined user logon information.



Refer) Automaticly logon to the Windows without entering logon information at the Windows Logon Dialog box.

Configure the Auto-Logon feature

Step 1) Click "Hardware settings(LAN/Local)" menu from NCT-200-XP Console

Step 2) Click "UTMA/UTSA device" setup menu

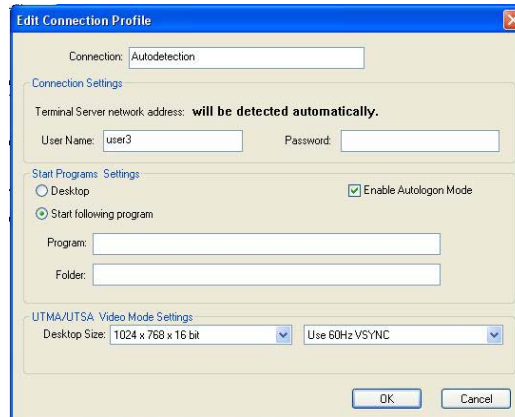
Step 3) Select the OfficeStation device for configure by double click

Step 4) Click "Connection Setting" to connection settings

Step 5) Select Connection Profile(Autodetection, TS 2, and/or TS 3)

Step 6) Click "Edit" from Connection Profile

Step 7) Click "Enable Autologon Mode"



Step 8) Fill in the User Name and Password information

Step 9) Click "OK" to save all settings.

Step 10) Click "OK" button from "Connection Settings"

-Note-

You can use Auto-Logon and Auto-Connect features together.

-END-

Remarks	
TS version	NCT-2000-XP R4.03.037